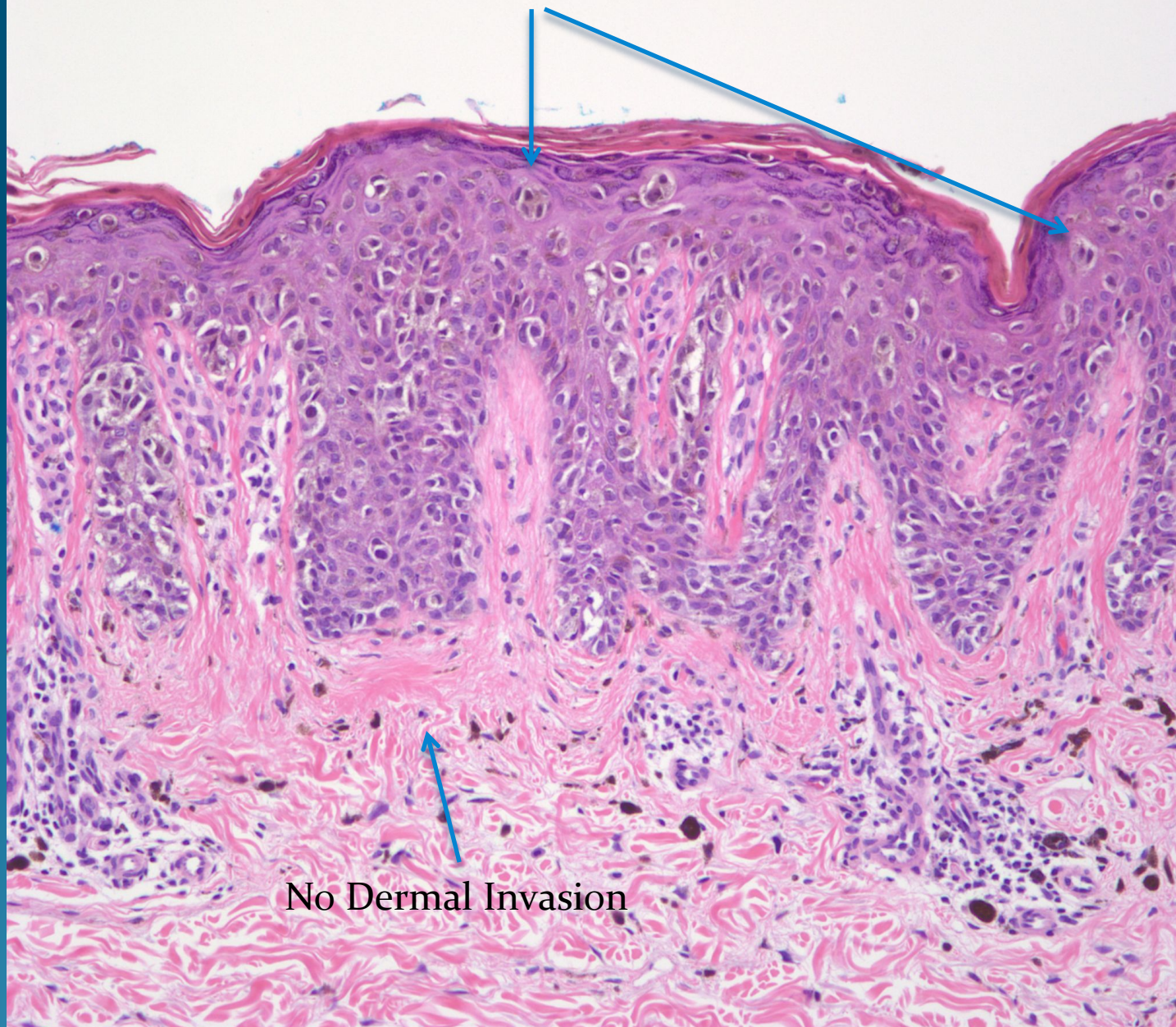


# What is the best diagnosis?

- A. Melanoma in situ
- B. Spitz nevus
- C. Pigmented Spindle Cell Nevus
- D. Extramammary Paget's Disease
- E. Langherhans cell histiocytosis

# Malignant Melanoma in Situ, Superficial Spreading Type

Pleomorphic melanocytes arranged singly and nests showing  
Extensive upward intraepithelial spread



No Dermal Invasion